



Eastern Madera County

Community Newsletter

Issue: June 2024

Look Up!
Is your tree canopy
a wildfire hazard?
page 4

The Road
in and Out
page 5

Focus On:
Tips on what should be
considered "critical"
Defensible Space work
work in our region.
page 2

Partner
Resources
and
Upcoming Projects

CALLING ALL
CONTRACTORS
RFPs for new projects
are coming. Are you
on our contact list?

High Hopes for New
Impactful Wildfire
Fuel Reduction
Projects
page 10

New Resources for
Eastern Madera County
Residents
page 3

Collaborations
Increasing
Capacity
page 6

Meet
Kevin Kirk!
page 7

And
Lots
More!!!





Focus On: Defensible Space Work

We put together a checklist that can serve as a task-list for residents in high wildfire severity zones*. This list is, of course, not all-inclusive, but a jumping off point. So, take a few minutes to go outside and do a thorough evaluation on what you can prioritize in the 100' surrounding your home.

Have you:

- removed flammable vegetation, mulch and replaced with gravel or bare dirt in 0 -5 ft
- trimmed lower tree limbs up to at least 8' , preferably over 10'
- removed highly flammable brush from the 0 - 30' zone around your home
- flagged plants that you want to relocate out of zone zero* in Fall or Spring 2025
- relocated flammable items stored under decks or in open storage
- trimmed tree canopies to break up fuel continuity
- removed all leaf and needle debris from rain gutters and roofs
- removed vegetation that is ladder fuel for fire to climb
- evaluated your “outdoor decor”. Is it a receptive fuel bed for embers?
- Analyzed how you can break up fuel bed continuity. How will fire reach your home?
- Moved wood piles at LEAST 30' from the home, into an ember resistant structure or clearing
- Called EMCFSC to help you design a priority project list

*What's your hazard severity zone? Find out at on page 12
*zone zero? see page 11

Community Resources & Assistance



Speaking of all that work that needs to be done, what if you need a helping hand? Here are some ways we may be able to help:



- Let EMCFSC do a Wildfire Risk Assessment. We can help you identify risks, prioritize tasks and investments according to code ordinances and safety, zero in on affordable retrofits, plan for vegetation management in the 100' zone, and help you identify resources you may qualify for. All assessments are private and we don't share your information with any public agency. ;)
- Have you received a citation from CAL FIRE inspectors, OR own your home and have been dropped by your insurance due to wildfire risks identified on your property, OR have been notified by your insurance that you need to perform fuel reduction on your defensible space? If you identify with one of these situations or THINK you may fail a code inspection, contact us to learn about the pilot "Defensible Space Referral Program". We have resources to assist in building defensible space for those in financial need or who are otherwise a member of a vulnerable population.
- Community Roadside Chipping. We will be performing roadside chipper days throughout Eastern Madera County. Check our website frequently for program participation requirements, schedules, and updates. Sign up for our newsletter also. This program will be active in the next several months.
- Community members who are in financial need or are otherwise vulnerable, may qualify for defensible space assistance and/or hazard tree removal at **NO COST**.

IF YOU ARE IN NEED, WE MAY BE ABLE TO HELP. REACH OUT VIA OUR WEBSITE
THE INQUIRY FORM IS ALSO AVAILABLE ON THE LAST PAGE OF THIS NEWSLETTER

WWW.EasternMaderaCountyFireSafeCouncil.COM

TREE CANOPY CONTINUITY

**COULD MANAGING YOUR TREE CANOPY BE
A KEY ELEMENT TO YOUR RESILIENCE
IN A WILDFIRE EVENT?**

SHORT ANSWER IS YES

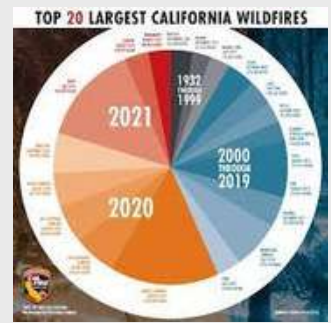
Fire travels by igniting adjacent receptive fuel. Often times when we are managing our defensible space, either we neglect to look up, or avoid it because we aren't personally capable of managing the upper canopy of our magnificent trees. Truth is, it's a critical piece of keeping wildfire at bay. You could have the perfect ground-level vegetation management, but if your **tree canopy acts as a continued source of fuel** for fire to reach your structure, or the density is such that a canopy burning from even a good distance can produce embers that will travel and seek out your structure's vulnerabilities, then all your ground-level efforts could be for naught. An easy way to see the liability of your tree canopy is to access **satellite imagery** like Google Earth. Zoom in on your property and do an analysis of the canopy "road" a wildfire may take if headed your way from nearby acreage. Do you see a dense, continual source of fuel? Clusters of resinous trees? Where do you see opportunities to create a break in this continuity? If you can, use land features that are already present to tie into such as a meadow, road, etc. and make a plan to **break up the path that fire will take**. If you need assistance creating in personal wildfire resilient-property plan, we can help.

The Road in and Out is

.....Everything.



ASHLEY NEBEKER, JUNE 2024



When I am contemplating the readiness of Eastern Madera County residents to evacuate in a severe emergency with no warning, I am plagued with tormenting visuals of our area's main arteries jammed to a standstill with trapped vehicles full of people fleeing for their lives as a wildfire consumes roadside vegetation and burns across the highways and roads. I see first responder vehicles unable to access areas due to poor roads, overgrowth, and hazard snags. Morbid, right? I know. But this imagery doesn't have to be left to the imagination. We can see exactly what it would look like by reviewing photos of the skeletal remains of cars left along the roadside after the Camp Fire swept through Concow and Paradise.

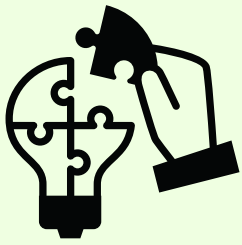
Although the work to repair poor road conditions and to create roadside buffers by removing fuel is ongoing, we are far behind and far underfunded for the sheer (seemingly insurmountable) amount of work that needs to be done. The fact is this work is expensive. It takes people, equipment, and a reliable funding source. This is not an issue we are alone in. Some of the wealthiest counties in California are far underfunded when it comes to making needed rapid alterations to the landscape as we adapt to a changing risk environment. In the past five years alone, the risk landscape has changed so dramatically when it comes to wildfires, that the brush that happily grew roadside unminded for decades is now a screaming wildfire threat. It wasn't a risk ignored. It is a risk unpredicted. See the infographic in the upper right for more information on wildfire statistics and get a better picture of how rapidly our risk evolved.

So how do we accelerate our efforts when our county's current budget for roads can only put a small dent in the fuel load? We do everything we can. Right now we are researching sources for funding roadside hazard fuel reduction and partnering with our county to work inside their right-of-way to clear priority routes as they are identified for us by CAL FIRE. We recently completed 17 miles of fuel reduction in the county right away, and have applications in for funding some 40 plus more. A citizen advisory committee is working hard to help the Madera County draft a road measure that will bolster and secure funding. (visit [The Measure T Website](#))

But here is a snag: Many will remember, during last year's winter storms, the residential calls for the county resources to bring a plow up their road because they were snowed in only to learn that their road was private and not maintained by the county. Private roads need to be maintained by the owner. That means the fuel reduction and work is left to the residents who live off these roads. This does not mean you are without resources. Reach out to our partner [Coarsegold Resource Conservation District](#) to see if your community can qualify to become a Firewise Community and learn about the benefits and resources available with recognition from the NFPA. Form a neighborhood volunteer group to work roadside. Pool funds. If you are still having a hard time identifying solutions to access and egress, let us know you are ready to become part of the conversation and we can keep an eye out for resources for you. There is a growing pool of resources, and you shouldn't be left out of the conversation.

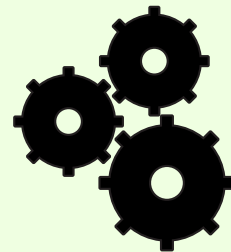
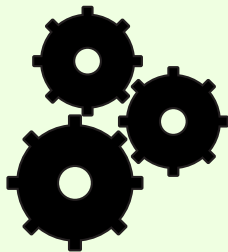
Whatever you do, don't get caught unprepared. Know your risk. Make a plan. Because as we at EMCFSC always say, "Wildfire Won't Wait For You to be Ready".





a a a a a a a a

Something that holds true across all efforts is that collaboration builds capacity and accuracy. Regionally, we are leaning into local knowledge for building impactful projects that will reduce wildfire risk for Eastern Madera County. The goal of our **Advisory Council and Planning Collaborative** is to gather the agency and partner experts for planning guidance and prioritizing as we build out wildfire mitigation projects. This also helps avoid regional overlap and accelerates the rate of prevention efforts. In partnership with Coalitions and Collaboratives, the EMCFSC has hired two consultants with decades of area forestry experience to identify priority fuel reduction projects with consultation from this planning collaborative and build them out for implementation. We are excited to develop and present these projects in the near future. We are exceptionally lucky as a region, to have an exceptional level of expertise present. We look forward to sharing project plans when they are complete and ready to present for implementation.





Meet Kevin Kirk!

Through partnership with Sierra Nevada Alliance and through funding from Sierra Nevada Conservancy, we have been given the opportunity to host Kevin through the Sierra Nevada Alliance Fellowship Pathway.

You may meet Kevin out in the community at an educational event or work with him directly as we do inspections and implement defensible space projects. Read more below, courtesy of the Sierra Nevada Alliance



SIERRA NEVADA
— ALLIANCE —

Drumroll please.... Meet Kevin Kirk, one of our Sierra Corps Forestry Fellows this year 🌲 Kevin is the Forest Health Project Specialist at [Eastern Madera Fire Safe Council](#), where he researches and drafts grants and implements funded programs. Before his Fellowship, Kevin worked as an arborist and Ecosystem Restoration Technician and grew up in the Sierra Nevada. He's excited to return so that he can have a greater impact on the region and looks forward to his career shift into project management while creating sustainable solutions for environmental problems and building skills that will help throughout his career. In his free time, Kevin loves climbing, camping, and hiking!



**KEVIN KIRK,
SIERRA CORPS
FORESTRY FELLOW**



Zoom in for a snippet of the Wildland Fire Potential Outlook

Feb 1st 2024, National Interagency Fire Center

Northern California and Hawai'i Significant fire potential is projected to be normal from February through May. From February through May all PSAs average less than one large fire per month. Hawaii's significant fire potential is forecast to be normal February through May. January was an unsettled weather month with extended periods of significant moisture due to an active jet stream. Precipitation was reported somewhere across northern California on all but four days. Atmospheric river events occurred during four separate periods. Precipitation anomalies were generally above normal with a few small pockets of below normal across the far eastern portions of North Ops. Average temperatures were mixed with some areas above normal and others below normal. Lightning recorded during the month was below normal, less than 100 strikes, as the 2012-2022 January lightning strike average is a little over 200. A very weak drier northerly and easterly wind event occurred on January 5, and several stronger southerly wind days occurred but were accompanied with high humidity. Dead fuel moistures were unusually moist across most of the area and not very flammable although readings were near normal, if not a little below normal, across northeast California and Far Eastside Predictive Service Areas (PSAs) during most of January. Shrub and canopy fuels were mostly dormant and less flammable, although chamise continued to hold onto some flammability. Herbaceous fuels experienced periods of freezing, especially during the first half of the month thus keeping green-up in check. Herbaceous fuels were mostly in a dormant state above 3000 feet. Moisture found within the snowpack was around 30 percent of normal on January 1 but by the January 26 was between 55 to 65 percent. Snow cover by the end of the month was generally relegated to sheltered elevations above 5000-6000 feet due to rain-on-snow and warmer atmospheric river impacts toward the end of the month. There were no drought designations for northern California. Fire business was light during January with an average of less than one fire per day, and there were no lightning fire ignitions. The largest human start was 3 acres located near Kilaga, or north of Roseville, on the January 19. Pile burning was the main fire business activity during January. There will be several complex oceanic-atmospheric teleconnections during the next four months that will alter the jet stream and storm track, leading to some outlook uncertainties. Precipitation for February and March is expected to be near to below normal although the jet stream should be more active during the earlier portion of February. The precipitation forecast for April and May is less certain, although timely moisture intrusions are likely and should keep the area devoid of critically dry dead fuels for an extended period of time. Temperature anomalies during the next two to three months should be near to above normal, while May could trend cooler depending on the El Niño/ENSO transition. There is no indication for unusual dry northerly or offshore wind event activity, so a near normal number of events is forecast. The significant herbaceous greenup or growth spurt should occur one to two weeks earlier than normal and occur during March and April across the lowlands. May will be a transition month for curing in the lowlands while herbaceous green-up moves further up the slopes. The snowpack is expected to be below normal on April 1, when moisture found within the snowpack is generally at its peak. The most impactful snow cover should be found above the 6000-foot elevation level on April 1 and will be 2000 to 3000 feet higher compared to last year at that time. Despite some drier timeframes during the next four months, drought is not expected to develop, and critically dry alignments should be kept at a minimum, therefore normal significant fire potential has been designated for northern California from February through May. Sea surface temperature (SSTs) anomalies surrounding the surrounding the Hawaiian Islands were generally above normal. Average temperature anomalies observed during January were generally near to above normal, with the strongest positive anomaly found across the Big Island. Precipitation anomalies were mixed due to various impacts from cold frontal systems. Widespread moisture with areas of heavy rain and high elevation snow impacted the island chain January 79. Drought intensities and coverage improved, with drought generally relegated to portions of Maui and the Big Island by the end of the month. Gusty west to southwest winds occurred periodically throughout the month but did not provide critical drying. El Niño conditions have peaked and will weaken, perhaps transitioning to a neutral state late during the outlook period. Average temperatures should be near to above normal during the outlook period, with precipitation likely near to below normal. Drought intensities will fluctuate with some residual drought likely continuing during most, if not all of the four-month period, especially impacting the Big Island. Green-up, however, is more noticeable across the leeward areas creating less critical landscapes of concern across the island chain. Timely significant moisture events, like what has been observed the past two months, should also continue despite the drier overall theme. Due to the mixed bag of ingredients, normal significant fire potential is projected for the island chain February through May, but drought and herbaceous curing trends will be monitored closely, especially if significant, timely moistening events don't occur. Leeward portions of the Big Island have the most concern. If February through May continue the same moisture trend as October 2023 - January 2024, then above normal potential for significant fires becomes more likely by late spring.



Read the full report [HERE](#)



REQUEST FOR PROPOSALS

CONTRACTORS

Do we have your information?

If you would like to receive RFPs and information on projects being funded through the Eastern Madera County Fire Safe Council,

Please send us your info to:

info@easternmaderacountyfiresafecouncil.com

or use the form below

When reaching out, please use CONTRACTOR in the subject line. In the body of the message, please introduce your business and include licensing and insurance information in *attachment form*. EMCFSC strives to hire local contractors for our projects.

CONTRACTORS RFP CONTACT INFORMATION

Please share your contact information along with a brief background and we will keep you informed as project opportunities arise.

[Sign in to Google](#) to save your progress. [Learn more](#)

* Indicates required question





Community Hazard Fuel Reduction Project

In response to the increasing threat of wildfires to the communities of Eastern Madera County, a number of desirable fuel treatment projects have been identified. These fuel treatment projects aim to increase defensible space around our communities, and ensure sufficient evacuation routes for residents. These projects also aim to increase the region's capacity for collaboration between stakeholder agencies and property owners. A regional planning collaborative was one of the main outcomes from these projects, and the scope of these projects range greatly. Our hope is that through collaboration amongst stakeholders, high quality fuel vegetation management, and accurate surveying and reporting we can create a lasting network of fuel treatment zones. These will decrease financial costs associated with fire suppression efforts, damage from wildfires to residents and businesses, and ensure a more sustainable Eastern Madera County for years to come.

Bass Lake East Fuel Break
Beasore Road Shaded Fuel Break
Bisset Lateral Fuel Reduction Project
CWDG Eastern Madera County Roadside Hazard Fuel Reduction
Fresno River/Mudge Ranch/French Gulch Fuel Reduction Project
Konklin Road Fuel Reduction Project
Miami Mountain/Chowchilla River Fuel Reduction Project
PG&E Sunset/Road 420 Hazard Vegetation Clearance Project
Taylor Mountain Fuel Reduction Project
Thornberry-Goat Mountain and Cascadell-Kinsman Fuel Break
Upper Finegold Creek Watershed Fuel Reduction Project
Wiley/Corrine Fuel Reduction Project
Willow Creek Fuel Reduction Project

Projects in the works. Stay tuned for progress updates.

ZONE ZERO ?

Zone 0 extends 5 feet from buildings, structures, decks, etc. While not legally required yet, Zone 0 is key for wildfire defense and preventing fires from spreading to your home. Here are the current guidelines:

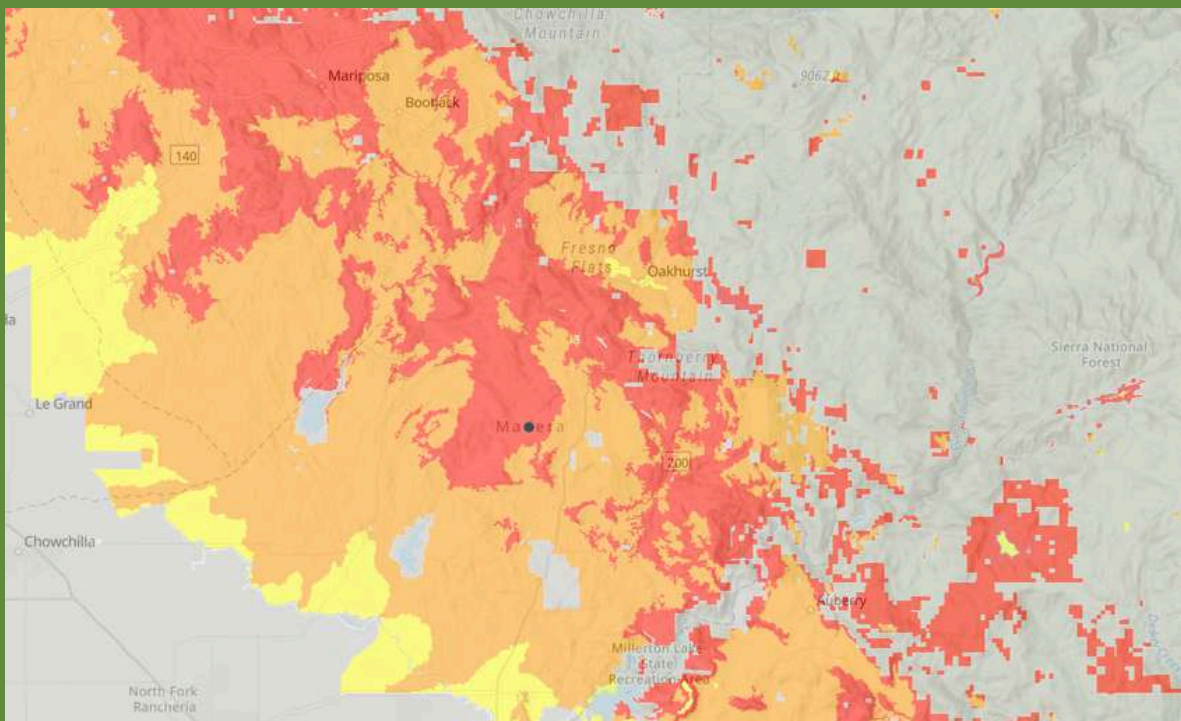
- **Use gravel, pavers, or concrete instead of combustible mulch**
- **Clear dead weeds, grass, and debris; check roofs, gutters, and outdoor areas**
- **Keep branches trimmed 10 feet away from chimneys and stovepipes**
- **Minimize combustible items like furniture and planters on decks**
- **Move firewood and lumber to Zone 2 for safety**
- **Replace combustible fencing and gates with fire-resistant materials**
- **Shift garbage and recycling containers to a safer area outside this zone**
- **Relocate boats, RVs, and vehicles away from this zone to reduce fire**

We will share what we know about ZONE ZERO code enforcement language and dates as we are updated and accurate agency information comes to us.

[See more here or visit](#)

<https://www.fire.ca.gov/dspace>

KNOW YOUR ZONE



“Public Resources Code 4201-4204 directs the California Department of Forestry and Fire Protection (CAL FIRE) to map fire hazard within State Responsibility Areas (SRA) based on fuel loading, slope, fire weather, and other relevant factors present, including areas where winds have been identified by the department as a major cause of wildfire spread. These zones, referred to as Fire Hazard Severity Zones (FHSZ), classify a wildland zone as Moderate, High, or Very High fire hazard based on the average hazard across the area included in the zone.”

-CAL FIRE OSFM

[DISCOVER YOUR ZONE HERE](#)

or by visiting

<https://osfm.fire.ca.gov/what-we-do/community-wildfire-preparedness-and-mitigation/fire-hazard-severity-zones-text>

Resources

Yosemite Gateway Prescribed Burn Cooperative is busy planning projects for next burn season. Get involved now and learn how Rx burning is a healthy and beneficial way to reduce wildfire risk and restore soil health.



Forbidden (403)

Sorry, you cannot access this page

Please visit our [Help Center](#) for more information. Error code:
[8925cc8b5f4f058c]

[Go back to the Canva homepage](#)



PO BOX 1306
 North Fork, CA 93643
 Jon Cottingham – Director
 Email: jon.cottingham@crzd.org
 559-760-6019
 www.crzd.org

WHO WE ARE:

The Coarsegold Resource Conservation District is a locally governed, special district of the state. CRCD is solely grant driven and led by a volunteer board of directors consisting of local community members throughout Eastern Madera County. The district encompasses approximately 534,380 acres of rural land in the foothills of Eastern Madera County. Properties in the district generally consist of ranching, recreational, and forestry resources. From the homestead to the high country, Coarsegold RCD has strived to promote, protect, and improve the diverse natural resources of Eastern Madera County, since its formation in 1966.

WHAT WE DO:

The CRCD provides landowners with assistance, funding, and information on a variety of conservation practices. We support community-led efforts for wildfire prevention, mitigation, and postfire rehabilitation throughout the district via funding, programmatic support, capacity building, training, and technical support.

PROGRAMMMATIC FOCUS AREAS:

- County Fire Prevention Coordinator
- Regional Firewise USA® Program Coordinator
- Defensible Space / Home Hardening Assessment
- Fuels Mitigation
- Fire Safety Outreach and Education
- Planning and Preparedness
- Post Fire Rehab
- Habitat Restoration



FOLLOW US ON SOCIAL MEDIA

FACEBOOK: @CRCD-Coarsegold Resource Conservation District
 INSTAGRAM: @ coarsegold_rcd

OUR PARTNERS:



RESOURCES

Great news! We've extended our Wildfire Safety Visits to Fresno, Madera, Mariposa and Tulare Counties. If you live in these areas, we're excited to offer FREE wildfire defense awareness education and services to help our communities in high wildfire-risk areas become more resilient ahead of wildfire season.

During a Red Cross Wildfire Safety Visit at your home, our team will discuss wildfire safety information and provide free preparedness resources, including:

- Wildfire safety information
- Defensible space education
- Developing your family's wildfire emergency plan
- What to do during an evacuation
- Home walkaround
- Additional resources

Sign up for a Red Cross volunteer team to visit you ahead of California's wildfire season at redcross.org/CCRwildfire



ARE YOU PREPARED FOR A WILDFIRE?

Sign up for a FREE visit from a Red Cross team to discuss wildfire preparedness and safety in the Central Valley.



**American
Red Cross**

Learn more at
redcross.org/CCRwildfire



Oakhurst River Parkway Trail Restoration Project

Rejuvenating a Sierra Nevada Gem!

VOLUNTEER OPPORTUNITIES

- Trail Workdays
- Planning Support
- Additional Fundraising
- Admin Support
- Volunteer Coordination
- Community Outreach

Funded by:



**SCAN THIS QR
CODE TO SIGN UP
TODAY!**



MADERA COUNTY PUBLIC INFORMATION TEAM

MADERA COUNTY GOVERNMENT CENTER
200 W. FOURTH STREET / MADERA, CALIFORNIA 93637
(559) 675-7700 / FAX (559) 673-3302 / TDD (559) 675-8970

FOR IMMEDIATE RELEASE:

May 23, 2024

MEDIA CONTACT

Name: Tristan Shamp
Department: Office of Administration, Grant Services
Email address: tristan.shamp@maderacounty.com
Phone: (559) 675-7703

Madera County awarded \$534,343 Community Wildfire Defense Grant for Wildfire Prevention and Mitigation

(Madera, Calif.) – Madera County is pleased to announce the receipt of a 2024 Community Wildfire Defense Grant award of \$534,343 from the US Forest Service. The Community Wildfire Defense Program (CWDG) is a grant program intended to help at-risk local communities and tribes plan for and reduce wildfire risk. The program aids communities in wildfire zones, targeting three main goals: (1) restore and maintain landscapes, (2) create fire adapted communities, and (3) improve wildfire responses.

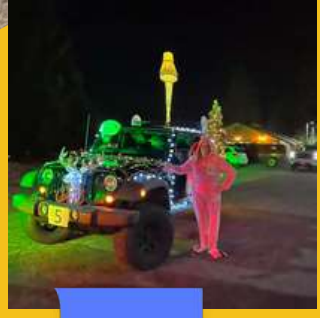
Madera County was one of 535 applications for this very competitive grant. Of those applications, 158 successfully obtained an award. The award will be used to continue to support the wildfire mitigation education and outreach efforts of the County Firewise Coordinator position with the Coarsegold Resource Conservation District. Yosemite Sequoia Resource Conservation & Development Council (YSRC&DC) is listed as a partner organization along with the Eastern Madera County Fire Safe Council (EMCFSC) for this project.

Madera County's project aligns with the program goals of promoting collaboration, prioritizing fuel reduction, and encouraging community-driven wildfire mitigation efforts.

"This grant is a significant investment in protecting our communities from the ever-increasing threat of wildfire. We are pleased to have received this grant award and look forward to working collaboratively with our partner organizations" Tristan Shamp, Grant Services Manager.

###





Follow us

THE EMCFSC IS POSTING UPDATES AND INFORMATION WEEKLY ON FACEBOOK. “LIKE” US TO SEE WHAT WE ARE UP TO IN BETWEEN NEWSLETTERS.





Inquire on Defensible Space Assistance HERE



Defensible Space Assistance

INTEREST FORM AND PROGRAM DESCRIPTIONS

The Eastern Madera County Fire Safe Council (EMCFSC) is pleased to announce that we are now accepting applications for Defensible Space Assistance and Hazard Tree Removal. We have resources available to assist low-income, tribal, elderly, or otherwise disadvantaged residents identified as vulnerable in Eastern Madera County (EMC) with establishing defensible space in compliance with regional code ordinances. The goal of this program is to connect the vulnerable populations in Eastern Madera County's high and very high severity risk zones with zero-cost defensible space work, hazard tree removal, and assistance in building a personalized wildfire risk mitigation strategy. We aim to create a bridge to a more wildfire-resilient landscape, one property at a time.

Funding is limited, so don't wait to inquire. To see if you and your property qualify, please fill out the form below, and we will reach out as quickly as possible with further questions and to schedule a site visit.

Reducing risk on private property is imperative to reducing our regional risk as a whole!

And remember:

"Wildfire won't wait for you to be ready."

More details:

Method:

Potential projects will be identified by EMCFSC staff after direct contact with an applicant (please fill out form below), by a direct referral from CAL FIRE defensible Space Inspectors, or by a referral from a local resource/agent after a defensible space inspection. EMCFSC will determine homeowner eligibility via an application and unit/site inspection process.

When a project is qualified, EMCFSC will perform a site visit to develop a treatment prescription to address hazards within the defensible space zone surrounding habitable structures. EMCFSC will then coordinate with our contractors to perform the prescribed treatment. The timeline from site inspection to implementation is dependant on the number of applicants we have in the pipeline.

Outcome:

The outcome of each fuel treatment project will result in 100' of defensible space in compliance with PRC 4291. EMCFSC will provide a post-treatment evaluation document to the homeowner for their records, as well as a copy of the evaluation document to the homeowner to provide to the relevant agent/agency if applicable. EMCFSC will provide maintenance prescription advice to the homeowner, as well as assist them in developing a

CAL FIRE UPDATES AND NEWS RELEASES

CAL FIRE NEWS RELEASE

California Department of Forestry and Fire Protection Madera-Mariposa-Merced Unit



CONTACT: Jaime Williams
Public Information Officer
(209) 966-3622

RELEASE June 13, 2024
DATE:

CAL FIRE Suspends Burn Permits in Madera, Mariposa, and Merced Counties

Mariposa – After another wet winter and above average snowpack, warming temperatures and winds are quickly drying out the abundant annual grass crop. The increasing fire danger posed by the high volume of dead grass and hotter, drier conditions in the region is prompting CAL FIRE to suspend all burn permits for outdoor residential burning within the State Responsibility Area of Madera, Mariposa, and Merced Counties. This suspension takes effect June 17, 2024 and suspends all residential outdoor burning of landscape debris such as branches and leaves.

"This year's grass crop flourished due to the amount of rainfall received over the winter months. Tall grass will contribute to the rapid spread of wildfires, so its important residents stay vigilant and prepare their homes for the upcoming summer months" said Unit Chief Mike van Loben Sels, CAL FIRE Madera-Mariposa-Merced Unit.

Since January 1, 2024, CAL FIRE and firefighters across the state have already responded to over 1,700 wildfires. While outdoor burning of landscape debris by homeowners is no longer allowed, CAL FIRE is asking residents to take that extra time to ensure that they are prepared for wildfires by maintaining a minimum of 100 feet of Defensible Space around every home and buildings on their property and being prepared to evacuate if the time comes.

Here are some tips to help prepare homes and property:

- Clear all dead and or dying vegetation 100 feet from around all structures.
- Landscape with fire resistant plants and non-flammable ground cover.
- Find alternative ways to dispose of landscape debris like chipping or hauling it to a biomass energy or green waste facility.

The department may issue restricted temporary burning permits if there is an essential reason due to public health and safety. Agriculture, land management, fire training, and other industrial type burning may proceed if a CAL FIRE official inspects the burn site and issues a special permit.

The suspension of burn permits for residential landscape debris does not apply to campfires within organized campgrounds or on private property. Campfires may be permitted if the campfire is maintained in such a manner as to prevent its spread to the wildland. A campfire permit can be obtained at local fire stations or online at [PreventWildfireCA.org](https://www.PreventWildfireCA.org).

For additional information on how to create Defensible Space, on how to be prepared for wildfires, as well as tips to prevent wildfires, visit www.ReadyForWildfire.org.

###

Created by Universal Document Converter

CAL FIRE NEWS RELEASE

California Department of Forestry and Fire Protection Madera-Mariposa-Merced Unit



CONTACT: Jaime Williams
Public Information Officer
(209) 966-3622

RELEASE June 12, 2024
DATE:

TESORO VIEJO PRESCRIBED BURN

Tesoro Viejo (Madera County)- The California Department of Forestry and Fire Protection (CAL FIRE), will be conducting a prescribed burn near the community of Tesoro Viejo on June 18 from 9:00am to 3:00pm. If weather conditions permit and resources are available, a total of 100 acres will be burned.

The prescribed burn will start on Tesoro Viejo Blvd. and extend north to the Madera Canal.

This project will help reduce the fire threat to the community of Tesoro Viejo, located along the Highway 41 corridor.

There should be little impact on Highway 41. There are no plans for slowing traffic or lane closers unless for an emergency. Please watch for crews and use caution when driving. This is a control burn so please do not report if you are in the project area.

For more information visit Fire.ca.gov

###

CAL FIRE NEWS RELEASE

California Department of Forestry and Fire Protection Madera-Mariposa-Merced Unit



CONTACT: Jaime Williams
Public Information Officer
(209) 966-3622

RELEASE June 12, 2024
DATE:

Minarets High School Fuels Reduction Project

O'Neals – The California Department of Forestry and Fire Protection (CAL FIRE) will be conducting a prescribed burn at Minarets High School on Sunday, June 23. The project will encompass 14 acres surrounding the high school and will protect the infrastructure by reducing hazardous vegetation. The burn will conclude by the afternoon and will not affect traffic along Road 200.

###

CAL FIRE NEWS RELEASE

California Department of Forestry and Fire Protection Madera-Mariposa-Merced Unit



CONTACT: Jaime Williams
Public Information Officer
(209) 966-3622

RELEASE June 12, 2024
DATE:

Prescribed Fire at Lake McClure

Mariposa-The CAL FIRE Madera- Mariposa -Merced Unit in cooperation with Merced Irrigation District (MID) will be conducting a vegetation management burn at Lake McClure. Approximately 50 acres of grass will be burned. The purpose is for the reduction of fuels to create a safe area at and around the peninsula designated for the launch point of fireworks.

CAL FIRE will also be utilizing this as a training opportunity to continue improving wildland firefighting tactics under a controlled environment. The burn is scheduled to take place June 20.

###

WILDFIRE WON'T

WAIT FOR YOU

TO BE READY



prepare now

